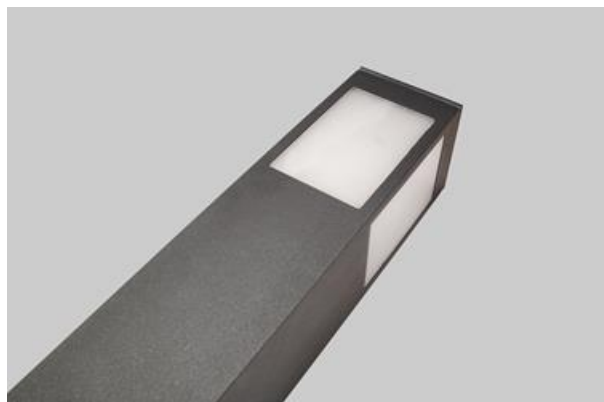
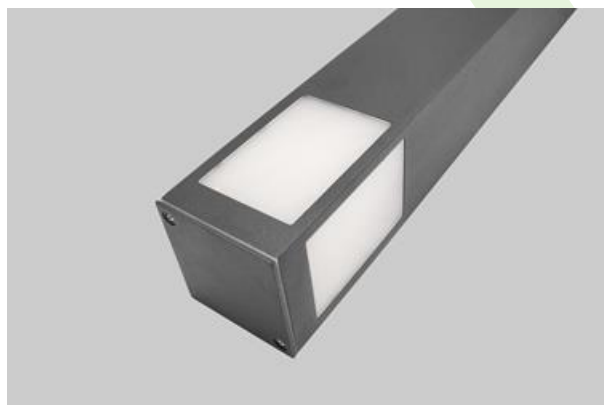




KUBIK POLE 100

Outdoor luminaires



Luminaire for interchangeable LED light sources so called Retrofit suitable for E27 frame. The body is made of aluminum painted with special facade paint which is resistant to weather conditions. PMMA milky colour diffuser. Very easy mounting and access to the interior of the luminaire.



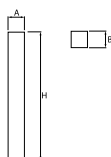
Supernova residential, Cracow



Main parameters:

Name	Luminous flux LED [lm]	Power of luminaire [W]	Color [K]	Dimensions A x B x H [mm]
KUBIK POLE 100 1S	depending on applied light source	depending on applied light source	depending on applied light source	100 x 100 x 740
KUBIK POLE 100 4S	depending on applied light source	depending on applied light source	depending on applied light source	100 x 100 x 740

Technical drawing:



Light and electrical features:

Light source	RETROFIT E27 (not included)
Voltage	220..240 V, 50..60 Hz
Lifetime of LED sources [h]	depending on applied light source
Lx/By	depending on applied light source
CRI	depending on applied light source
SDCM (LED sources)	depending on applied light source
Operating temperature range [°C]	
Driver	none

* Variant to specify when ordering

Mechanical features:

Assembly	for the ground
Material	aluminum
Color	RAL 9005 (black) RAL 7016 (anthracite, metallic, fine structure) *
Diffuser	PMMA opal

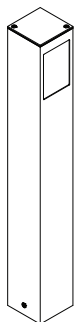
Additional information:

The beam directions of luminaires-see the following page.

Note: The power shown refers to the whole system (tolerance +/- 10%).
The given luminous flux refers to LED light sources (tolerance +/- 10% depends on the value of the colour temperature).
Technical data may be changed. Photos of the luminaires may differ from reality.
Date of last update: 23-12-2022

Dodatkowe informacje / Additional information / Zusätzliche Informationen:

Kierunki świecenia / Directions of lighting / Richtungen der Beleuchtung



WERSJA / VERSION: 1S



WERSJA / VERSION: 2S



WERSJA / VERSION: 2S 90ST



WERSJA / VERSION: 3S



WERSJA / VERSION: 4S

