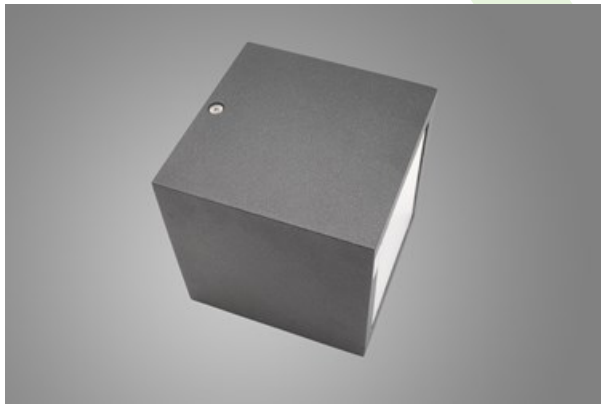


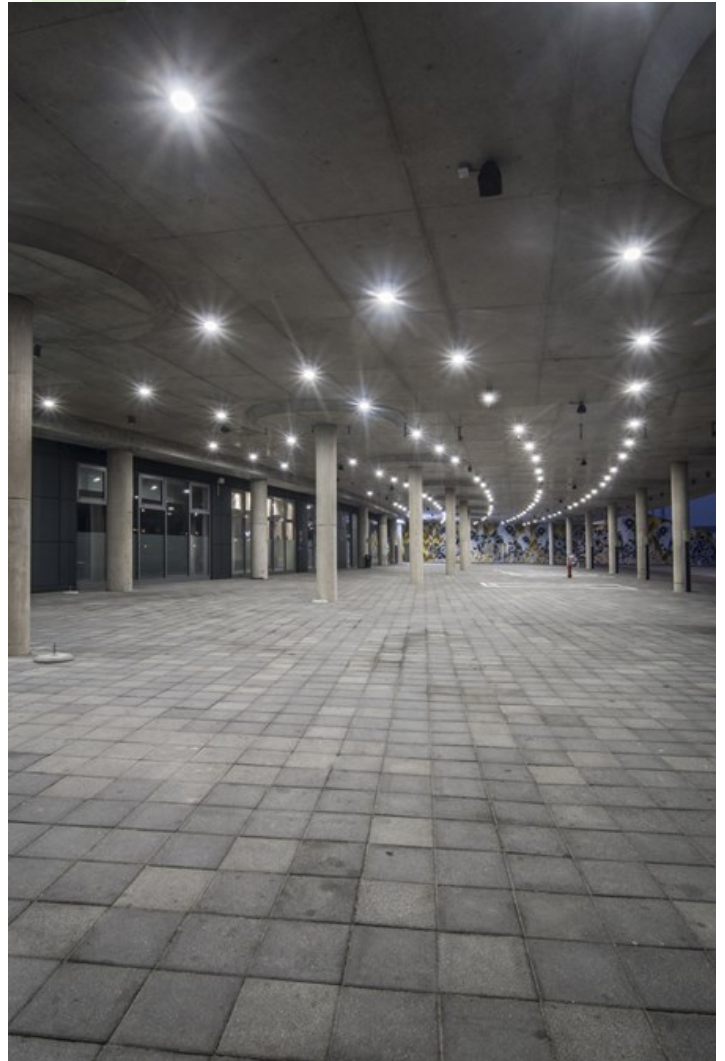


## KUBIK CEILING LED

Outdoor luminaires



An outdoor fitting designed for ceiling mounting. The body is made of aluminum. Energy-efficient fitting made of component parts produced by renowned companies. Ergonomic shapes of the fitting enable the application of the Kubik-type fitting almost in every building. The assembly is very easy. Level of protection against penetration of dust and water - IP44.



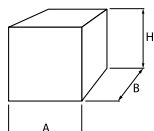
Energa stadium, Gdańsk



## Main parameters:

| Name                   | Luminous flux LED [lm] | Power of luminaire [W] | Color [K]   | Dimensions A x B x H [mm] |
|------------------------|------------------------|------------------------|-------------|---------------------------|
| KUBIK CEILING LED 1800 | 2200 / 2268            | 12,5                   | 3000 / 4000 | 120 x 120 x 120           |

## Technical drawing:



## Light and electrical features:

|                                  |   |
|----------------------------------|---|
| Light source                     | LED                                     |
| Voltage                          | 220..240 V, 50..60 Hz                   |
| Lifetime of LED sources [h]      | 95000 (1) / 100000 (2) / 100000 (3)     |
| Lx/By                            | L90/B10 (1) / L80/B10 (2) / L70/B10 (3) |
| CRI                              | 85                                      |
| SDCM (LED sources)               | 2                                       |
| Operating temperature range [°C] | -25 ÷ 30                                |
| Driver                           | standard on/off (E)                     |
| Power factor cos φ               | >0,95                                   |

## Mechanical features:

|          |                                |
|----------|--------------------------------|
| Assembly | surface mounted on ceiling     |
| Material | aluminum                       |
| Color    | RAL 9005 (black)               |
| Diffuser | PC (opallescent polycarbonate) |

Note: The power shown refers to the whole system (tolerance +/- 10%).  
The given luminous flux refers to LED light sources (tolerance +/- 10% depends on the value of the colour temperature).  
Technical data may be changed. Photos of the luminaires may differ from reality.  
Date of last update: 23-12-2022