



FILAR LED

Outdoor luminaires



Architect luminaires designed for illuminating public green areas such as: parks, squares or lawns. Other important places of applying post lighting fittings is immediate vicinity of public buildings, office buildings and car parks but also green belts along parade lanes, nearness of garden cafes, open spaces in front of cinemas, theatres, hotels and many other places within a urban area. Base made of aluminium, diffuser tube of acrylic satin. Luminary is equipped with LED panel of high luminous efficacy. The type and dimensions of the foundation each time depend on the foundation conditions. The final selection of the foundation, in accordance with the Building Law, is the responsibility of the designer of the object.



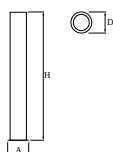
Technology Park, Cracow



Main parameters:

Name	Luminous flux LED [lm]	Power of luminaire [W]	Color [K]	Dimensions A x B x H [mm]
FILAR LED 5000	5600	63	4000	300 x 300 x 2545
FILAR LED 7500	7600	85	4000	300 x 300 x 3045
FILAR LED 10000	11200	125	4000	300 x 300 x 2545

Technical drawing:



Light and electrical features:

Light source	LED
Voltage	220..240 V, 50..60 Hz
Lifetime of LED sources [h]	36000
Lx/By	L70/B50
CRI	>80
SDCM (LED sources)	3
Operating temperature range [°C]	-25 ÷ 30
Driver	standard on/off (E)
Power factor cos φ	>0,95

Mechanical features:

Assembly	for the ground
Material	aluminum
Color	RAL 9005 (black)
Diffuser	acrilsatine

Note: The power shown refers to the whole system (tolerance +/- 10%).
The given luminous flux refers to LED light sources (tolerance +/- 10% depends on the value of the colour temperature).
Technical data may be changed. Photos of the luminaires may differ from reality.
Date of last update: 23-12-2022