

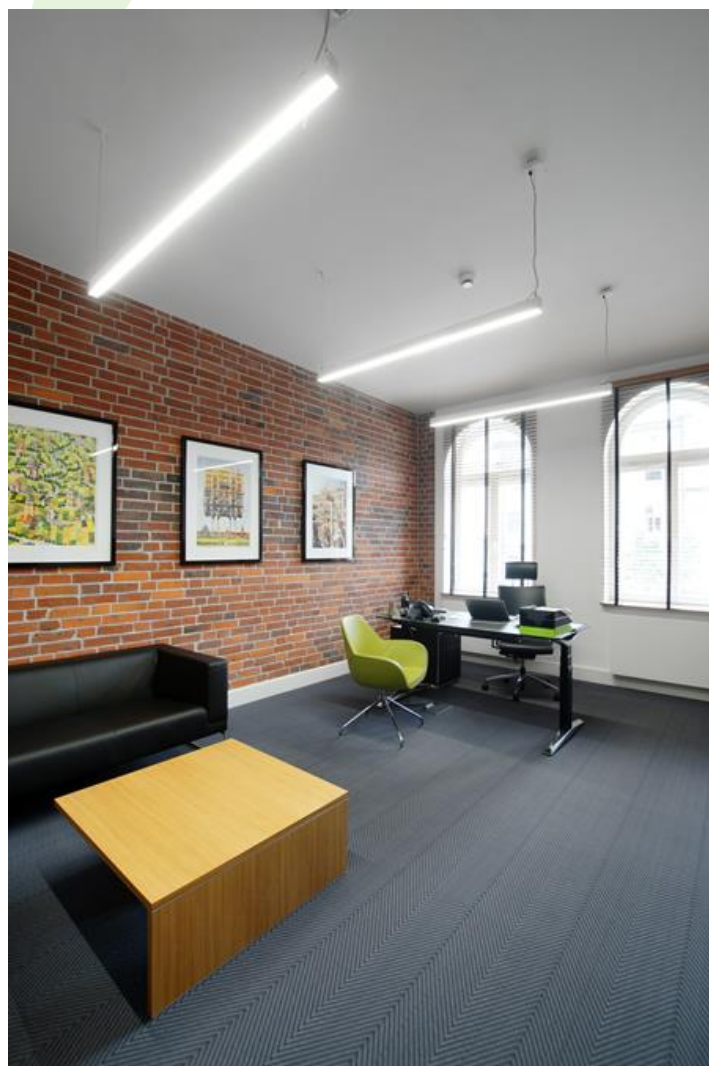


ESSENCE LED

Surface mounted luminaires



Luminary made from aluminum profile adapted to be mounted on suspensions, or directly on a solid ceiling construction. Its body made from anodized aluminum profil. There are two colors available: white (RAL9016) or grey (RAL9006). Its diffuser is made from white polymethyl methacrylate. Luminary to be used in offices, conference halls, all structures of public sectors.



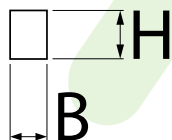
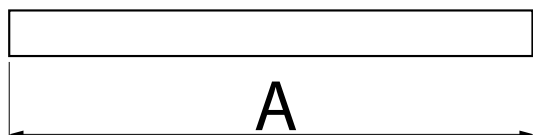
Domena.pl offices, Bydgoszcz



Main parameters:

Name	Luminous flux LED [lm]	Power of luminaire [W]	Color [K]	Dimensions A x B x H [mm]
ESSENCE LED 2600	2525 / 2617	14,4	3000 / 4000	1134 x 36 x 63
ESSENCE LED 3300	3316 / 3436	19,2	3000 / 4000	854 x 36 x 63
ESSENCE LED 3900	3788 / 3926	21,7	3000 / 4000	1694 x 36 x 63
ESSENCE LED 4400	4406 / 4565	24,7	3000 / 4000	1134 x 36 x 63
ESSENCE LED 5500	5526 / 5727	30,5	3000 / 4000	1414 x 36 x 63
ESSENCE LED 6600	6608 / 6848	35,3	3000 / 4000	1694 x 36 x 63

Technical drawing:



Light and electrical features:

Light source	LED
Voltage	220..240 V, 50..60 Hz
Lifetime of LED sources [h]	100000 (1) / 147000 (2)
Lx/By	L80/B10 (1) / L70/B50 (2)
CRI	>80
SDCM (LED sources)	3
Photobiological risk class (IEC/EN 62471)	RG0
Operating temperature range [°C]	5 ÷ 30
Driver	standard on/off (E) DIM DALI (EDD) *
Power factor cos φ	>0,95

* Variant to specify when ordering

Mechanical features:

Assembly	directly mounted to ceiling construction or surface mounted on slings
Material	aluminum
Color	RAL 9006 (gray, metallic, fine structure) RAL 9010 (white) *
Diffuser	PLX (PMMA opal)

Additional information:

The luminaire can be made in CLO version.

Note: The power shown refers to the whole system (tolerance +/- 10%).
The given luminous flux refers to LED light sources (tolerance +/- 10% depends on the value of the colour temperature).
Technical data may be changed. Photos of the luminaires may differ from reality.
Date of last update: 23-12-2022