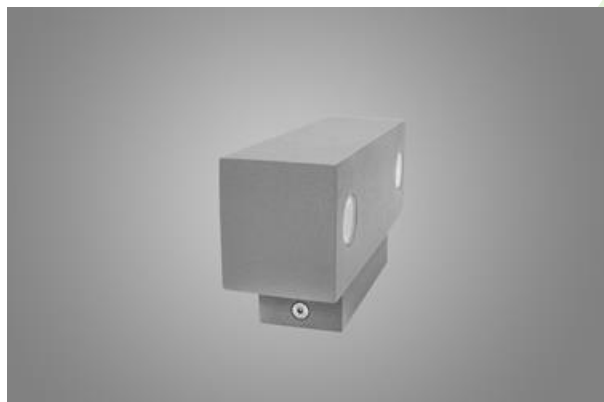




BERYL KN DUO LED UP&DOWN

Architectural luminaires



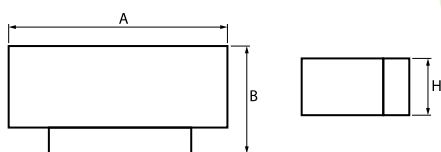
Luminary adapted to be mounted on walls. High lighting efficiency LEDs were used as light sources. Optical system consists of professional lens that provide light distribution of 5-21° angle. Owing to the optical system solutions, the product is highly effective. Its body is made from anodized aluminum profile. It is resistant to solids, dust, and liquids penetration – IP40 or IP65. This type of luminary is recommended for decorative or accent illumination, e.g. in restaurants, pubs, or cafes.



Main parameters:

Name	Luminous flux LED [lm]	Power of luminaire [W]	Color [K]	Dimensions A x B x H [mm]
BERYL KN DUO LED UP&DOWN 4x1,7W	608	8	4000	150 x 82 x 50
BERYL KN DUO LED UP&DOWN 4x2,4W	748	11	4000	150 x 82 x 50

Technical drawing:



Light and electrical features:

Light source	LED
Voltage	220..240 V, 50..60 Hz
Lifetime of LED sources [h]	50000
Lx/By	L70/B50
CRI	>80
SDCM (LED sources)	5
Operating temperature range [°C]	-20 ÷ 30
Driver	standard on/off (E)

* Variant to specify when ordering

Mechanical features:

Assembly	mounted on wall
Material	aluminum
Color	RAL 9005 (black) RAL 9007 (dark gray, metallic, fine structure) RAL 7016 (anthracite, metallic, fine structure) RAL 9016 (white) *
Diffuser	transparent polycarbonate

Note: The power shown refers to the whole system (tolerance +/- 10%).
The given luminous flux refers to LED light sources (tolerance +/- 10% depends on the value of the colour temperature).
Technical data may be changed. Photos of the luminaires may differ from reality.
Date of last update: 23-12-2022