



ATENA LINE NEW OUTDOOR LED

Outdoor luminaires



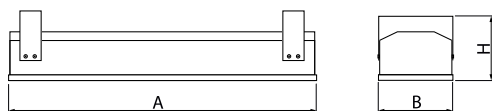
Outdoor luminaire dedicated for pole mounting, ceiling mounting or for hanging mounting. The external application is possible due to the fact that the product is equipped with a pressure compensation valve, and the housing has a special painting adapted to the external conditions. Rectangular housing made of aluminum sheet. Only one colour available: RAL 9005 (black). Upon client request there is a possibility to make longer luminaire than standard dimensions. Consequently, the luminaire will have bigger luminous flux. The light sources are protected by diffuser made of hardened glass and the whole construction is characterized by high level of protection against dust and water penetration-IP65.



Main parameters:

Name	Luminous flux LED [lm]	Power of luminaire [W]	Color [K]	Dimensions A x B x H [mm]
ATENA LINE NEW OUTDOOR LED 12000 ASY	11832 / 12006	83 / 81	4000 / 5000	430 x 201 x 150 / 430 x 201 x 190
ATENA LINE NEW OUTDOOR LED 12000 MEDIUM	11832 / 12006	83 / 81	4000 / 5000	430 x 201 x 150 / 430 x 201 x 190
ATENA LINE NEW OUTDOOR LED 12000 WIDE ODB	11832 / 12006	83 / 81	4000 / 5000	430 x 201 x 190
ATENA LINE NEW OUTDOOR LED 18000 ASY	18635 / 18909	105	4000 / 5000	430 x 201 x 150 / 430 x 201 x 190
ATENA LINE NEW OUTDOOR LED 18000 MEDIUM	18635 / 18909	105	4000 / 5000	430 x 201 x 150 / 430 x 201 x 190
ATENA LINE NEW OUTDOOR LED 18000 WIDE ODB	18635 / 18909	105	4000 / 5000	430 x 201 x 190
ATENA LINE NEW OUTDOOR LED 24000 ASY	24847 / 25213	138	4000 / 5000	465 x 201 x 150 / 465 x 201 x 190
ATENA LINE NEW OUTDOOR LED 24000 MEDIUM	24847 / 25213	138	4000 / 5000	465 x 201 x 150 / 465 x 201 x 190
ATENA LINE NEW OUTDOOR LED 24000 WIDE ODB	24847 / 25213	138	4000 / 5000	465 x 201 x 190
ATENA LINE NEW OUTDOOR LED 30000 ASY	31059 / 31516	177	4000 / 5000	588 x 201 x 150 / 588 x 201 x 190
ATENA LINE NEW OUTDOOR LED 36000 ASY	37271 / 37819	210	4000 / 5000	680 x 201 x 150 / 680 x 201 x 190

Technical drawing:



Light and electrical features:

Light source	LED
Voltage	220..240 V, 50..60 Hz
Lifetime of LED sources [h]	83000
Lx/By	L90/B10
CRI	>80
SDCM (LED sources)	3
Operating temperature range [°C]	-25 ÷ 40
Driver	standard on/off (E)
Power factor cos φ	>0,95

Mechanical features:

Assembly	mounted on poles; directly mounted to ceiling construction or surface mounted on slings
Material	aluminum
Color	RAL 9005 (black)
Diffuser	SH (transparent hardened glass)

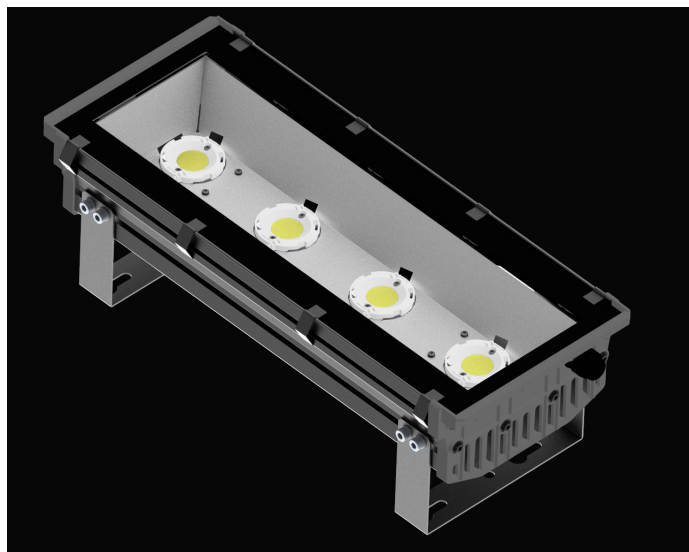
Additional information:

Luminaire design variants - see the following page. In the standard version, the luminaire is made with a 1 meter long cable. Optional IP65 connectors are available. It is possible to make IK10 version with PC-T polycarbonate diffuser.

Note: The power shown refers to the whole system (tolerance +/- 10%).
The given luminous flux refers to LED light sources (tolerance +/- 10% depends on the value of the colour temperature).
Technical data may be changed. Photos of the luminaires may differ from reality.
Date of last update: 23-12-2022

Dodatkowe informacje / Additional information / Zusätzliche Informationen:

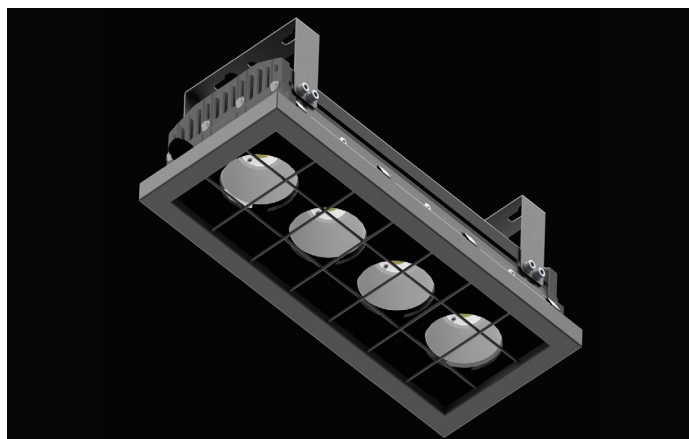
Wersje / Versions / Versions:



WIDE ODB - wersja z odbłyśnikiem pojedynczym blaszanym
WIDE ODB - version with single tin reflector
WIDE ODB - eine Ausführung mit einem Einzelreflektor aus Blech



WIDE / MEDIUM / NARROW - wersja z odbłyśnikami okrągłymi osobnymi dla każdego źródła LED
WIDE / MEDIUM / NARROW - version with round reflectors separate for each LED light source
WIDE / MEDIUM / NARROW - eine Ausführung mit separaten runden Reflektoren für alle LED-Leuchtmittel

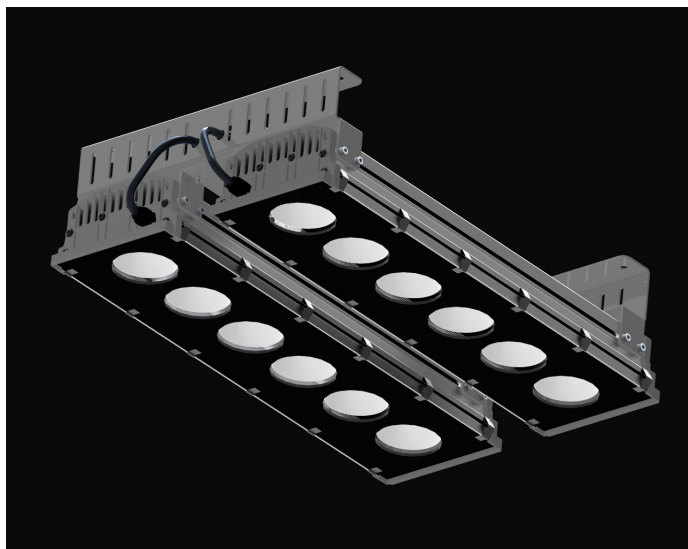


KR - oprawa z kratą ochronną
KR - luminaire with a protective grid
KR - Leuchte mit Schutzgitter



UCHWYT OBROTOWY - oprawa z uchwytem obrotowym
UCHWYT OBROTOWY - luminaire with rotary handle
UCHWYT OBROTOWY - Leuchte mit Drehgriff

Dodatkowe informacje / Additional information / Zusätzliche Informationen:



Możliwość łączenia dwóch opraw w jeden segment - uchwyt nastropowy:
Possibility of connection two fittings in one segment - a ceiling holder:
Optional können zwei Leuchten in einem Segment miteinander kombiniert werden - Deckenhalterung:



Możliwość łączenia dwóch opraw w jeden segment - uchwyt obrotowy:
Possibility of connection two fittings in one segment - a rotary holder:
Optional können zwei Leuchten in einem Segment miteinander kombiniert werden - Drehhalterung:



Możliwość montażu 1-punktowego na sztywnym pręcie (pręt po stronie klienta):
Possibility of 1-point assembly on a rigid rod (rod should be provided by client):
Montage an einer steifen Stange möglich (1-Punkt-Montage) (die Stange wird durch den Kunden beigestellt):